

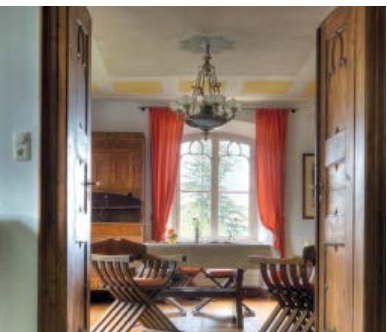
Schloss
zu Hopferau

Stay in a castle

Whether for a stylish short-term stay or a relaxing holiday – the Schloss zu Hopferau castle with its very special ambience invites you to linger awhile.

Built in the late Gothic style in 1468, the recently renovated building is a real gem of the Eastern Allgäu region. The multifarious sights of the region coupled with hiking and biking opportunities make the castle the perfect starting point for your own discovery tours.

The historic building exudes its special charm as soon as you enter, taking visitors back in time to the late Gothic era.





Festivities, banquets, and receptions

The dignified setting of the almost 550-year-old castle gives prestige to both private festivities and official occasions alike. Imposing rooms for up to 100 persons are at your disposal. Discreet piano music in a candle-lit castle promises to give your guests an experience they will never forget.

The restaurant, banquet hall, and Freyberg hall offer stylish surroundings for selected culinary delights.

Sleep & feel good

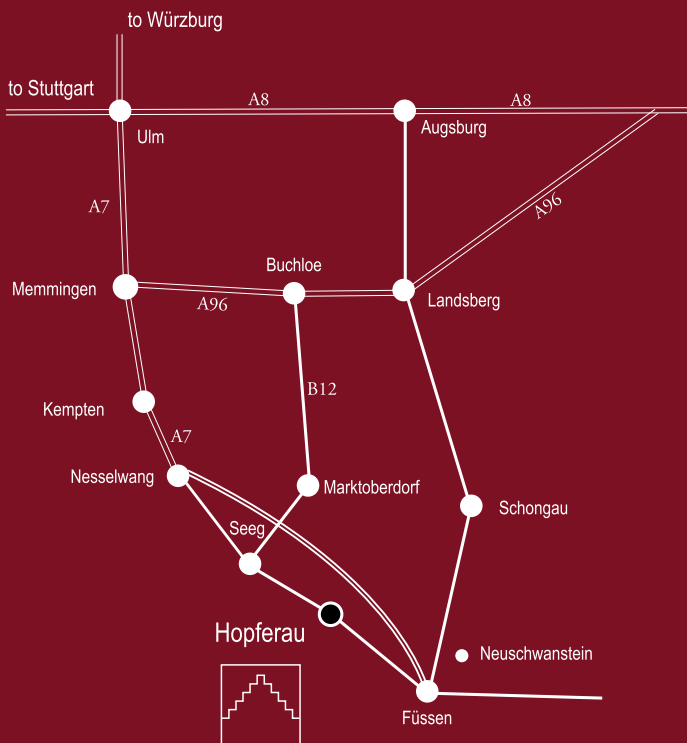
The 14 modernly furnished rooms provide an architectural counterpoint to the lovingly restored premises of the historical castle.

Meetings, seminars, and conferences

The success of professional meetings depends not least on the atmosphere of the venue. With its unique combination of history and modernity, the castle is particularly suitable for smaller groups of up to 40 people. Four meeting rooms of different sizes and distinctive character cater to your individual needs; equipped with the latest seminar technology, they meet all modern requirements.



Driving:



Schloss zu Hopferau

Schloßstraße 9-11 • 87659 Hopferau

Telephone 08364-984890 • Telefax 08364-9848944

info@schloss-hopferau.com • www.schloss-hopferau.com